



Sling and Slide Sheet Laundry Instructions Home Washing Machine with Non-Chlorine Bleach

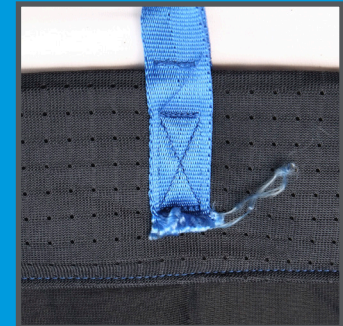
Wash Formula for Home Style Washing Machines Using Non-Chlorine Bleach

If an item is visibly soiled, dispose of any soiling as needed and consider a pre-wash cycle or an individual wash using the longest wash setting without any soap

- Place the items in the washing machine loosely until the machine is about one half full; Do not overload the machine
- Set the machine to heavy soil or the longest wash setting, water temperature to hot wash, medium rinse, and set the machine to full or max load
- Using the designated detergent drawer, add powder/liquid detergent and oxygen bleach (sodium percarbonate, OxiClean, etc.) as recommended by the manufacturer
- If no drawer is available, add detergent and oxygen bleach after the machine has filled with water
- Do not pour detergent or bleach directly on the sling
- Allow the machine to complete the cycle
- For maximum product life, tumble dry on no heat or low heat for 30 minutes or until the sling is dry

Do not use a sling that is still damp

Always inspect the sling for signs of damage, wear, or fraying before use



medcotech.com
855.475.4647



Sling and Slide Sheet Laundry Instructions Home Washing Machine with Chlorine Bleach

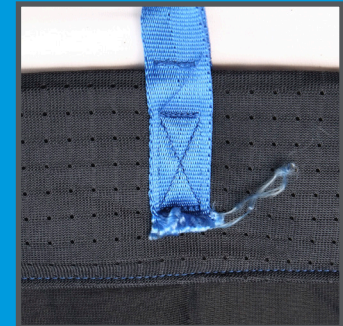
Wash Formula for Home Style Washing Machines Using Chlorine Bleach

If an item is visibly soiled, dispose of any soiling as needed and consider a pre-wash cycle or an individual wash using the longest wash setting without any soap

- Place the items in the washing machine loosely until the machine is about one half full; Do not overload the machine
- Set the machine to heavy soil or the longest wash setting, water temperature to hot wash, medium rinse, and set the machine to full or max load
- Using the designated detergent drawer, add powder/liquid detergent and 2 ounces or less of liquid bleach, as recommended by the manufacturer
- If no drawer is available, add powder/liquid detergent as recommended by the detergent manufacturer and 2 ounces of liquid chlorine bleach after the machine has filled with water
- Do not pour detergent and bleach directly on the items
- Allow the machine to complete the cycle
- For maximum product life, tumble dry on no heat or low heat for 30 minutes or until the sling is dry

Do not use a sling that is still damp

Always inspect the sling for signs of damage, wear, or fraying before use



medcotech.com
855.475.4647

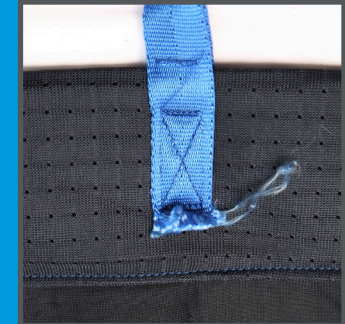


Sling and Slide Sheet Laundry Instructions Commercial Washing Machine in Excess of 100lb with Non-Chlorine Bleach

Wash Formula For Commercial Washing Machines In Excess Of 100 lb Capacity
Using A Commercial Chemical Company And Non-Chlorine Bleach

	Time (minutes)	Temperature (°F)	Water Level	Chemistry per 100lbs of Fabric
Break	10	150	Low	3 ounces of detergent 3 ounces of alkali 8 ounces of 34% H2O2
Drain	1			
Rinse	2	135	High	
Drain	1			
Rinse	2	120	High	
Drain	1			
Rinse	2	100	High	
Drain	1			
Sour	3	95	Low	1 ounce laundry sour
Extract	7			

- Avoid tunnel washers
- Always inspect slings for signs of damage, wear, or fraying before use
- MedCo products may be tumble dried at temperatures not exceeding 150°F for approximately 30 minutes





Sling and Slide Sheet Laundry Instructions
Commercial Washing Machine in Excess of 100lbs
Commercial Chemical Company and Chlorine Bleach

Wash Formula For Commercial Washing Machines In Excess Of 100 lb Capacity
Using A Commercial Chemical Company And Non-Chlorine Bleach

	Time (minutes)	Temperature (°F)	Water Level	Chemistry per 100lbs of Fabric
Break	7	140	Low	2 ounces of detergent 2 ounces of alkali
Drain	1			
Bleach	6	140	High	2 ounces of 12.5% chlorine bleach
Drain	1			
Rinse	2	125	High	
Drain	1			
Rinse	2	110	High	
Drain	1			
Sour	3	95	Low	1 ounce laundry sour
Extract	7			

- Avoid tunnel washers
- Always inspect slings for signs of damage, wear, or fraying before use
- Chlorine used at this amount is for sanitation and not stain removal or whitening
- MedCo products may be tumble dried at temperatures not exceeding 150°F for

